

THREE YEAR SURVEY OF COLLEGE ACCEPTANCES

University of Alabama*	Emory University	Miami University, Oxford	Sarah Lawrence College
Albright College	Eugene Lang College	University of Miami	Savannah Coll. of Art & Des.
American University	Evergreen State College	Michigan State University*	Sch. of the Art Inst. of Chicago
Amherst College	Fairfield University	University of Michigan	School of Visual Arts
Appalachian State University	Flagler College	Middlebury College	Sewanee University
Arizona State University	Florida Atlantic University	Mississippi State University	Skidmore College
University of Arizona	Florida State University	University of Mississippi	Smith College
Art Institute of Boston, Lesley	Fordham University*	Morgan State University*	University of South Carolina
The University of the Arts	Franklin & Marshall College	Mount Holyoke College	Univ. of South Florida, Tampa
Auburn University	Franklin College Switzerland	Mount Saint Mary's University	Univ. of Southern California*
Bard College	Furman University	Muhlenberg College	Southern Methodist Univ.*
Baruch College of the CUNY	Gannon University	University of NE at Lincoln	Spelman College
Baylor University	George Mason University*	University of New Hampshire	Univ. of St. Andrews (Scotland)
Bethany College	George Washington University*	New York University**	St. John's University
Birmingham-Southern College	Georgetown University**	Niagara University	St. Lawrence University
Boston College	Georgia Institute of Technology*	UNC—Chapel Hill*	St. Mary's College of MD**
Boston University	Gettysburg College	UNC—Charlotte	Stevenson University*
Brandeis University	University of Glasgow	UNC—Greensboro	Suffolk University
Bridgewater College	Goucher College	UNC—Wilmington*	Susquehanna University
Brown University	Greensboro College	NC Central University*	Swarthmore College
Bucknell University*	Guilford College	North Carolina State University	Sweet Briar College
Carnegie Mellon University*	Hampton University	Northeastern University	Syracuse University**
Case Western Reserve Univ.	Harvard University	Northwestern University*	The University of Tampa
Catholic University of America	Haverford College	College of Notre Dame of MD	Temple University
University of Central Florida	High Point University*	Occidental College	Tennessee State University
College of Charleston	Hobart & William Smith Colls.**	The Ohio State University	University of TN, Knoxville
University of Chicago	Hofstra University	Ohio Wesleyan University	Texas Christian University
University of Cincinnati	College of the Holy Cross	Oxford College of Emory Univ.	Towson University
Claremont McKenna College	Hood College	Pace University, New York City	Trinity College
Clark Atlanta University*	Howard University**	Parsons School of Design*	Trinity College Dublin
Clark University	Univ. of IL, Urbana-Champaign	Penn State Univ., Univ. Park	Tufts University
Clemson University	The Illinois Institute of Art	Penn State Univ., York	Tulane University*
Coastal Carolina University	Indiana Univ. at Bloomington	University of Pennsylvania**	Tuskegee University
Colby College	Ithaca College	University of Pittsburgh	Union College
Colgate University*	Jacksonville University	Pitzer College*	US Naval Academy Prep School
Univ. of Colorado at Boulder*	James Madison University*	Pomona College	Vanderbilt University
Colorado College	Johns Hopkins University	Pratt Institute	University of Vermont*
Colorado School of Mines*	Kansas State University	Princeton University	Villanova University
Connecticut College	University of Kansas	Providence College	Virginia Commonwealth Univ.
University of Connecticut*	Lafayette College	Purchase College	Virginia Tech.
Coppin State University	Lehigh University	Purdue University	Virginia State University
Cornell University*	Lenoir-Rhyne University	Quinnipiac University	Virginia Union University
Curry College	LIM College	Randolph College	Virginia Wesleyan College
Davidson College	Longwood University	Randolph-Macon College	University of Virginia***
University of Dayton	Loyola Marymount University	University of Redlands	Wake Forest University*
Delaware State University	Loyola University Chicago	Reed College	Washington & Jefferson Coll.
University of Delaware*	Loyola University Maryland**	Rensselaer Polytechnic Inst.	Washington & Lee University**
Denison University	Loyola University New Orleans	Rhode Island School of Design	Washington College*
University of Denver	Lynchburg College	Rhodes College	Washington Univ. in St. Louis*
DeSales University	Lynn University	Rice University	Wellesley College
Dickinson College***	Manhattan College	University of Richmond*	Wesley College
Drew University	MD Institute College of Art	Roanoke College	Wesleyan University
Drexel University	Univ. of MD, Eastern Shore*	Rochester Inst. of Technology	West Virginia University
Duke University	Univ. of MD, Baltimore County**	University of Rochester	College of William & Mary*
Duquesne University	Univ. of MD, College Park*****	Rollins College	Williams College
East Carolina University	Marymount Manhattan College*	Saint Joseph's University	Wofford College
East Stroudsburg Univ. of PA	MA Institute of Technology	Salisbury University	The College of Wooster
Elizabethtown College	University of MA, Amherst	University of San Diego	Xavier University of Louisiana
Elon University*	McDaniel College	San Francisco Art Institute	Yale University*
Emerson College	McGill University	Santa Clara University	York College of Pennsylvania

* Denotes 2010 college choice



Roland Park Country School

Academic Profile 2010-2011

5204 Roland Avenue
Baltimore, Maryland 21210-1996
PHONE: 410-323-5500
FAX: 410-323-2164
www.rpcs.org
CEEB # 210-180

Leigh Martin Lowe
Director of College Counseling
lowel@rpcs.org
Janet E. Weller
Associate Director of College Counseling
wellerj@rpcs.org
Ron Pringle
College Counseling Assistant
pringler@rpcs.org

Jean Waller Brune, Head of School
Joan F. Smith, Head of Upper School

PHILOSOPHY Roland Park Country School, a K-12 college preparatory school for girls, is dedicated to the intellectual, aesthetic, physical and moral development of its students. While maintaining high academic standards, the school upholds tradition and promotes innovation. The school encourages self-discipline, independence of thought, tenacity of purpose, creativity, and spiritual well-being. It fosters personal integrity, respect for others, an appreciation of diversity, and a cooperative, resilient spirit.

Roland Park Country School values the friendly atmosphere of mutual trust inherent in an inclusive community. The school strives to instill in its students a lifelong love of learning as well as the motivation to look within and beyond themselves in order to become responsible, contributing members and leaders of their communities.

THE SCHOOL Founded in 1901, RPCS is an independent day school for girls in kindergarten through grade twelve. The school is located in Roland Park, a residential neighborhood in northern Baltimore City, on a 21 acre campus. The college preparatory curriculum emphasizes the intellectual, aesthetic, physical, and moral development of the students. RPCS welcomes applicants of all races, religions and ethnic origins and does not discriminate on the basis of race, religion, sexual orientation or ethnic origins in the administration of its policies and programs. RPCS is accredited by the Association of Independent Maryland Schools and is a member of the National Association of Independent Schools. The School is the first girls' school in Maryland to be awarded a chapter in the Cum Laude Society.

ENROLLMENT and FACULTY Total—676. Upper School—288. Senior Class—76. Upper School Faculty—55 (Average teaching experience is 15 years, with 92% holding post-bachelor's degrees). Upper School Student/Faculty Ratio—6:1.

ACADEMIC REQUIREMENTS and CURRICULUM RPCS offers a rigorous, college preparatory curriculum. The standard and expected academic load of every student is five "major" courses each year. To satisfy graduation requirements, a student must complete:

English—4 years
Mathematics—4 years (at least through Pre-Calculus)
Laboratory Science—3 years (to include Physics, Chemistry and Biology)
History—3 years (to include Non-Western World, European, and United States)
Foreign Language—3 years (of the same language)

Additional courses in art, music, theater, public speaking, and physical education are also required.

ADVANCED PLACEMENT In 2010, 129 students sat for 358 AP examinations for which 84% earned scores of 3 or above. Year-long Advanced Placement courses are offered in:

Biology	Latin
AB and BC Calculus	Music Theory
Chemistry	Photography
Chinese	Physics
Computer Science	Psychology
Economics	Russian (Pilot Program)
English Language	Spanish Language
English Literature	Spanish Literature
Environmental Science	Statistics
Government	Studio Art
European History	US History
French Language	

Students are limited to taking no more than three AP classes in any one year without specific permission of the Upper School Head. In addition to APs, the School offers coordinate courses with Gilman and Bryn Mawr Schools for foreign languages, 11th grade English, US History and senior electives.

CLASS RANK Roland Park Country School policy prohibits specific ranking, therefore we use no form of class rank.

GRADING SYSTEM

Honor Roll gives recognition to those students who have attained an average of 87% or higher.

The School's passing mark is 65.

Grade equivalents are as follows:

A	100—90
B	89—80
C	79—70
D	69—65
F	Below 65

THE INTEGRATED MATH PROGRAM

The Integrated Math Program at Roland Park Country School is a three-year sequence that intends to prepare students for the study of college-level mathematics as seniors. The sequence presumes that students enter 9th grade having successfully completed a traditional Algebra I course. The sequence provides students with learning experiences equivalent to traditional courses in Geometry, Algebra II, Trigonometry, and Pre-Calculus. In addition, the sequence provides students with significant experience in Probability, Statistics, and Data Analysis and includes technology and writing components. At the end of the sequence, students choose from AP Calculus (AB or BC), AP Statistics, or a wide variety of rigorous non-AP options, including courses in economics, calculus, finite and discrete mathematics, and multivariate and college algebra.

TECHNOLOGY The use of technology is an integral part of the School's commitment to providing a superior education for girls. To that extent, Roland Park Country School is a laptop school. All students in grades 7 - 12 purchase their own laptops through the School, which they use in all classrooms, in science labs, in the library, and for homework. Graduates are highly skilled in using the internet appropriately as a research tool, designing spreadsheets, power point presentations, virtual labs, graphing, note taking, and communicating with faculty through their web pages and email. The use of laptops gives all students the flexible resources they need, when they need them, empowering them to become active participants in their learning.

MOST ADVANCED COURSE OFFERINGS In addition to standard college preparatory sections, our curriculum offers **regular, Accelerated (A), Honors (H), and Advanced Placement (AP)** sections as follows:

	Grade 9	Grade 10	Grade 11	Grade 12
English	H	H	AP	Electives
Foreign Language	H	H	AP	AP
Mathematics	A, H	A, H	A, H	H, AP
History	H	AP	AP	H, AP
Science	H	H	H	AP

COMMUNITY SERVICE RPCS places emphasis on the developmental ideals associated with volunteerism and helping others. Every student is required to devote a minimum of 60 hours to community service, 40 hours of which must be at one location during her four years in the Upper School. Most of our students far surpass this minimum.

STUDENT LEADERSHIP Leadership positions are limited as follows: In any one year, a student may be the sole President of one organization or Co-President of two. In addition, a student may repeat as class President only from junior year into senior year.

CUMULATIVE GPA:

The cumulative GPA is weighted and includes all graded courses. Weighted grades are reflected on the transcript with an additional four points given for AP, three points for Honors, and two points for Accelerated classes.

Full Range of Class: 99.67—73.33

Mean: 85.95

SCHEDULE

Courses are blocked for 70-minute class periods in a ten-day cycle. Classes meet according to the following frequency pattern (levels of credit are noted in italics):

Full Credit:

9th and 10th Grade

English and Foreign Language 5 out of every 10 days
Math, Science and History 6 out of every 10 days

11th and 12th Grade

Non-AP Classes 6 out of every 10 days

AP Classes 7 out of every 10 days

Half-Credit: 5 or 6 out of every 10 days

Quarter-Credit: 3 out of every 10 days

100% of Roland Park Country School's graduates over the past five years have matriculated to four-year colleges and universities.

The Class of 2010 applied to an average of 6 colleges each.

PROFILE OF THE CLASS OF 2011

JUNIOR YEAR GRADE DISTRIBUTION FOR CLASS OF 2011:

SUBJECT	100-90	89-80	79-70	69-65	Below 65	TOTAL
English 11	7	30	11	0	0	48
English 11 (AP)	13	15	0	0	0	28
Trig - Calculus (H)	5	10	0	0	0	15
Algebra II—Geometry II	2	3	2	3	1	11
Algebra/Trigonometry (A)	5	13	6	0	0	23
Calculus BC (AP)	1	0	0	0	0	1
Pre-Calculus (A)	6	13	6	0	0	25
U.S. History	11	32	8	2	1	54
U.S. History (AP)	6	13	0	0	0	19
Chemistry	8	26	7	1	1	42
Chemistry (H)	15	17	0	0	0	32
Spanish Language (AP)	3	2	0	0	0	5
Spanish IV	9	12	1	0	0	22
Spanish III	0	2	6	0	0	8
French Language (AP)	6	3	0	0	0	9
French IV	1	3	2	0	0	6
French III	0	2	0	0	0	2
Russian III	1	3	3	0	0	7
Chinese III	2	1	2	0	0	5

PERCENT GRADE DISTRIBUTION

The accompanying grade distribution graphic represents the percent of final grades, earned by the Class of 2011 during their junior year, that fall into each of the bracketed distribution areas.

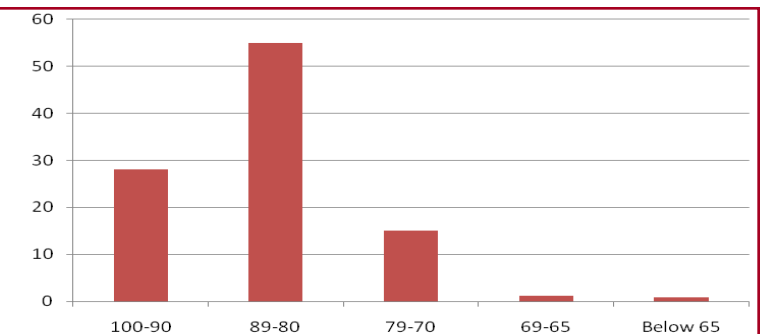
28% of the grades earned fell between 90-100

55% of the grades earned fell between 80-89

15% of the grades earned fell between 70-79

Less than 2% of the grades earned fell between 60-65

Less than 1% of the grades earned fell below 65



CLASS OF 2011 STANDARDIZED TEST RESULTS

The following numbers represent the SAT Reasoning Test and ACT Exam testing summary through the June 2010 test administration.

Test	Mean	Mid 50% Range
SAT I Verbal/CR	563	510—620
SAT I Math	567	500—640
SAT I Writing	589	530—650
SAT I Total	1719	1520—1880
ACT Composite	26	23—27

CLASS OF 2011 SAT II SUBJECT TEST RESULTS

The following numbers represent the testing summary for those members of the class who sat for the SAT II Subject Tests, through the June 2010 test administration.

Subject	Mean	# of Students
Chemistry	550	6
Literature	620	24
Math I	603	11
Math II	627	14
US History	618	18
French	658	4
Spanish	600	4